



# AQUALOGICAL

Smarter Plumbing Design

## Capability Statement

..... May 2021 .....

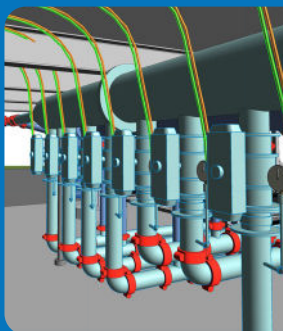
Aqualogical is an award-winning boutique consultancy that provides smarter plumbing design - reducing the time, cost and challenges associated with Plumbing and Fire Services.



Sleeman Sports Complex

# Contents

About.....	Page 3
Scope of Services .....	Page 6
Hydraulic Services .....	Page 7
Fire Services .....	Page 8
Company Details .....	Page 9
Team .....	Page 10
Project Methodology.....	Page 12
Experience .....	Page 13



## Sleeman Sports Complex

This is a small portion of the design and documentation of compressed air services at Sleeman Sports Complex which opened in May 2021.

This complex provides a ski jump training facility with multiple jumps into a swimming pool. When the skiers land in the pool, it is necessary to provide a safe landing zone to soften the impact. To achieve this, compressed air is discharged into the pool to create an air cushion.



## About

### Exceeding Industry Requirements

The construction industry is a very dynamic and demanding industry that requires great attention to detail to ensure quality and accuracy of design and documentation.

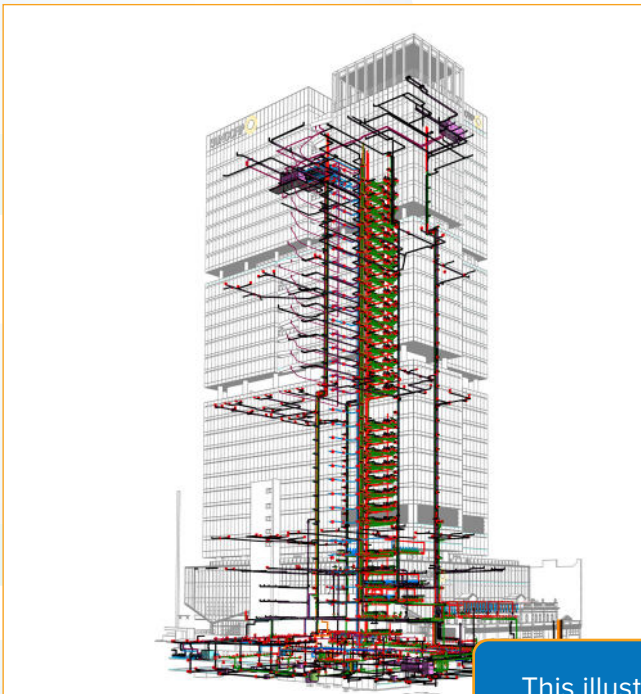
With over one hundred years of staff-experience developing practical evidence-based plumbing design solutions, Aqualogical is well-qualified to meet these demands.

Our specialist hydraulic and fire services knowledge is applied to all our projects by highly-skilled staff whose first priority is to ensure your individual project requirements are met.

Each and every project provides a unique set of challenges. These challenges typically have a range of solutions available which our team will explore to achieve the project goals and resolve all challenges in an economical manner.

The Aqualogical design team undertakes a selected maximum quantity of projects at any one time. This allows for efficiency in completing documentation in a timely manner and with a greater degree of accuracy. It also enables our staff to develop a better balance between personal life and work commitments.

### No project too big. No detail too small



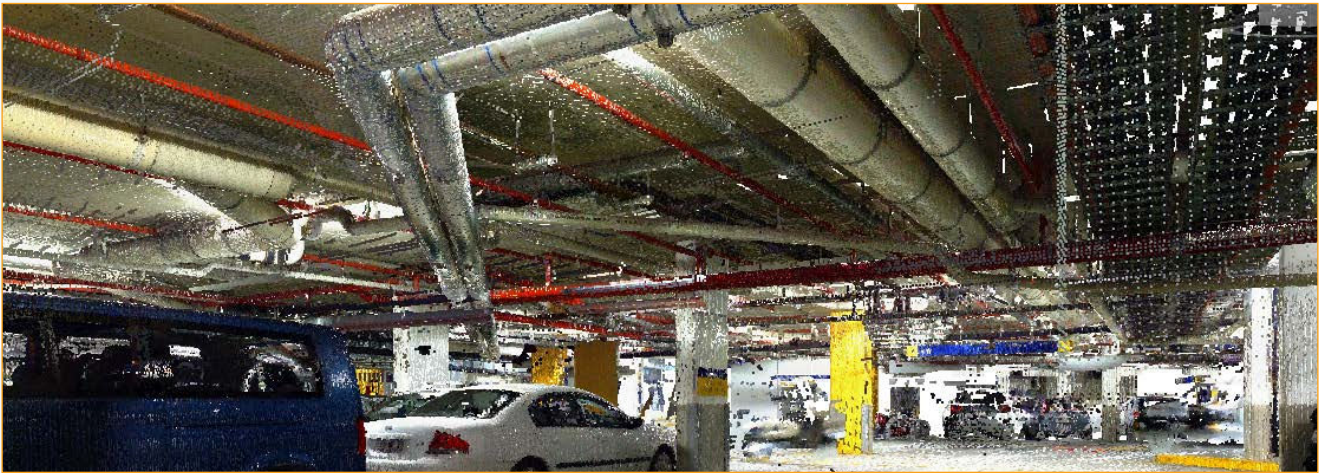
This illustrates Aqualogical's experience with Building Information Modelling which ranges from services coordination right through to 7D modelling of large projects. We have experience with many digital engineering tools including Revit MEP, Navisworks, Revizto, H2X, & BIM 360.

## Better Technology

Aqualogical actively research and embrace new technologies to facilitate the production of our advanced documentation.

All projects undertaken by Aqualogical are documented in 3D using Revit MEP to LoD 300 standard. This is our minimum standard. Based on this, our documentation also provides individual material lists for each project.

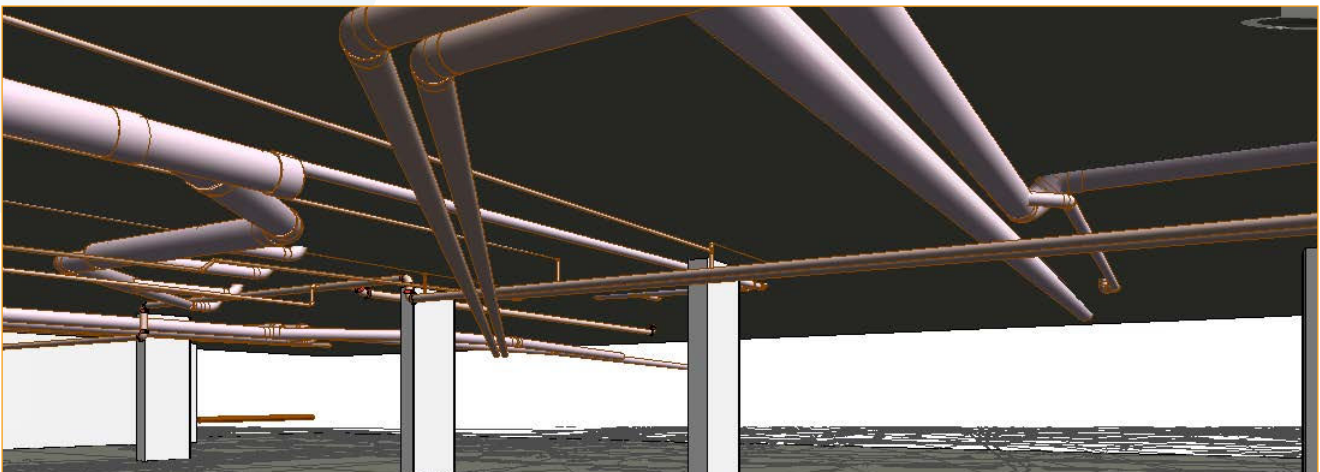
To further enhance our documentation accuracy, Aqualogical has a Trimble X7 digital scanner for scanning of existing sites. This is presented in a colourised point cloud and exported to Revit for modelling.



Colourised Point Cloud Scan

Our Building Information Model (BIM) experienced design staff utilise the Revit MEP software to launch design documentation to new levels of accuracy. This enables detailed co-ordination to be achieved with the clash detection feature. It also provides for detailed bill of quantities to be prepared.

Consultant workstations have full access to H2X drafting and hydraulic calculation software. Whether projects require building information modelling or a simplified design process, Aqualogical will cater for your project needs.



Model produced from Point Cloud Scan (above)

## Experience the difference

Aqualogical's large format colour scanner and A0 plan plotter enable fast plotting of any size from A4 to extended A0 plans. All of Aqualogical's design mark-ups are scanned to file. This enables our designers to send clients fast hand mark-ups of schematic designs and also assists with Quality Assurance.

Security of documentation is assured with all files being backed up to a secure offsite location by a data security company on a daily basis. This ensures both security over access to documentation, as well as redundancy in the event of data loss.

Our offices are strategically located in Underwood, 15 minutes south of Brisbane CBD. This position locates us near a hub of 4 highways allowing easy access to Brisbane, Ipswich, Gold Coast and Sunshine Coast. From this location we also service all of Queensland and have completed many projects in the Far North region.

Aqualogical is committed to provide our clients exceptional service at all times. This service is ensured by:-

- ◆ Providing logical and accurate plumbing and fire system design solutions.
- ◆ An enthusiastic design team with prompt responses to enquiries.
- ◆ Strategically limiting the number of projects undertaken so as not to overburden or over-stress our design team ensuring 100% commitment to projects.
- ◆ Structuring specialised design teams to suit our clients project requirements.
- ◆ Weekly staff training sessions.
- ◆ In-house full-time document controller.
- ◆ Experienced with Greenstar & ABGR projects.
- ◆ Investigation of alternative design solutions.
- ◆ Coordination with architecture, structure, & other building services.
- ◆ Fast applications to local authorities for documentation approval.
- ◆ Extensive quality assurance checking.
- ◆ Extensive experience with design & construct style projects.
- ◆ Web based projects experience.





## Scope of Services

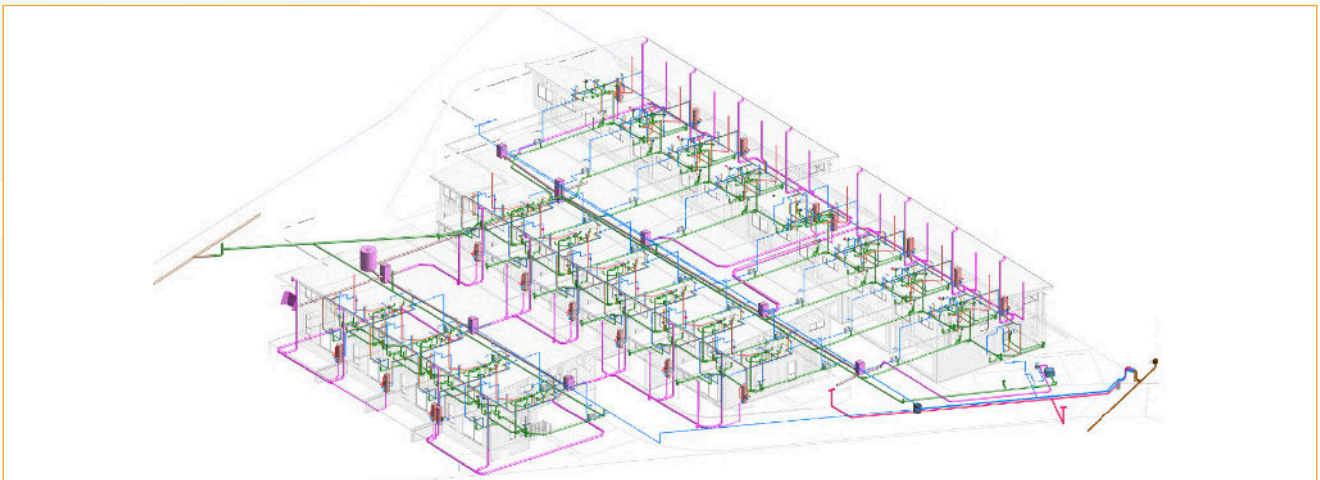
Aqualogical can provide the following services for our clients:

- ◆ Hydraulic and fire system design & documentation
- ◆ Site investigation
- ◆ Budget analysis
- ◆ Design & construct documentation
- ◆ Operation & maintenance manuals
- ◆ Attendance at meetings
- ◆ Council applications, negotiations & liaisons
- ◆ As recorded documentation
- ◆ Investigation & testing of existing services
- ◆ Compliance assessment
- ◆ Peer design review

## Hydraulic Services

Aqualogical can provide the following hydraulic services documentation for our clients:

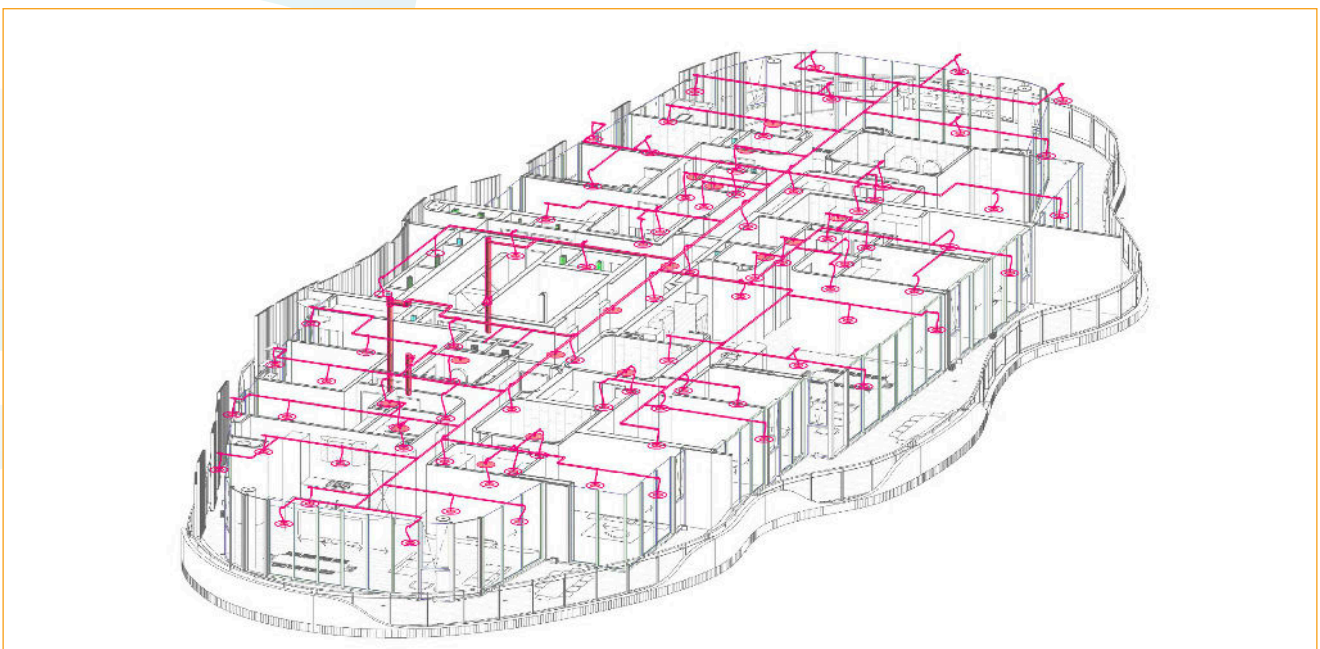
- ◆ House drainage and sanitary plumbing
- ◆ Vacuum drainage systems
- ◆ Trade waste drainage and trade waste plumbing
- ◆ Trade waste treatment systems
- ◆ Gutter designs, rainwater downpipes, rainwater drainage and car park drainage
- ◆ Rainwater harvesting & reticulation systems
- ◆ Cold water systems including pumps and storage systems
- ◆ Hot water, high temperature water and warm water systems including pumps and reticulation
- ◆ Hot water generation plants including gas, electric, solar, heat pump, waste heat recovery, coal, diesel and wood fired
- ◆ Gas reticulation systems including natural, LP, ethylene, oxygen, carbon dioxide and acetylene
- ◆ Erosion & sediment control
- ◆ Sanitary fixtures, tap ware and appliances
- ◆ Compressed air systems including compressors, driers, receivers, reticulation and control
- ◆ Specialist systems including steam, blood, detergent, sanitiser, chemical, etc



## Fire Services

Aqualogical can provide the following fire services documentation for our clients:

- ◆ Fire hydrant systems including storage, pumps, boosters and pressure controls
- ◆ Fire hose reel systems, Fire extinguishers
- ◆ Gas suppression systems
- ◆ Fire sprinkler systems including FM approved systems
- ◆ Deluge fire suppression systems
- ◆ Wall drenching systems
- ◆ Special hazard suppression systems
- ◆ Smoke detection systems
- ◆ Vesda computer room systems
- ◆ Tailored solutions for any hazard



## Company Details

Aqualogical company details includes the following:

ABN 24 116 871 544 and ACN 116 871 544.

Professional Indemnity Insurance with Agile Underwriting Services Pty Ltd.  
Policy G01B0112620F, expires 22/06/2021.  
Limit of Indemnity is \$10,000,000.00 in any one claim

Public Liability Insurance with Focus. Policy OPK-21587, expires 22/06/2021.  
Limit of Insurance is \$20,000,000.00 on any one occurrence

Work Cover Queensland, Policy WCA120285315

Registration of Prequalification (PQC) Level 3, with Queensland Government,  
Registration Number: 1402A

Queensland Building and Construction Commission  
Licence number: 1099893

Quality Management System  
ISO 9001:2015 – 1106 – Valid till 6<sup>th</sup> April 2024

## Team

Aqualogical has a very experienced team not just in years, but also the quantity and diversity of projects completed.

Our team is motivated and focused on surpassing client expectations.

All our staff have been carefully selected to ensure that a teamwork environment is fostered in the preparation of projects for our clients. We believe that this teamwork approach coupled with our extensive experience ensures the quality of our documentation.

We will work together with you to develop the best value for your project. With our in-depth local knowledge, we aim to provide a level of service second to none.

---

### **Anthony Freeman (AHSCA)** DIRECTOR/PRINCIPAL

Anthony is a Director and the Responsible Principal of Aqualogical.

Anthony undertakes the design quality assurance validation checks at each phase of our projects.

Anthony has accumulated extensive experience across all market sectors during his 40 years in the construction hydraulics industry.

### **Chris Tritton (Fellow AHSCA)** SENIOR HYDRAULIC CONSULTANT

With over forty-five years' experience in the plumbing design industry, Chris has gained a widespread knowledge working in all facets of construction including multi-story residential, commercial, retail, and industrial buildings.

Chris is the current President of the AHSCA Qld and has been in that position for most of the last ten years. He is also a Director of the National Body of the AHSCA. In these positions, he has represented all Hydraulic Consultants on various State Government committees and has presented at many industry seminars and conferences.

### **Ken Crase (AHSCA)** SENIOR HYDRAULICS CONSULTANT

With over thirty years' experience in the engineering hydraulic services industry, Ken has gained extensive experience working on multi-story residential, commercial, retail, and industrial projects. Ken is also the current Vice President of the AHSCA Qld.

### **Joe Griffin (AHSCA),** SENIOR HYDRAULICS DESIGNER

With over fifteen years' in the plumbing construction industry, Joe brings a wealth of experience to any project. Joe has very strong communication and project management skills, is reliable, hard-working and possesses excellent people skills.

### **Chris Marrinan** RETAIL HYDRAULIC SERVICES DESIGNER

Chris undertakes the design and documentation of hydraulic services for all tenancies.

### **BIM Team:**

Our design team is supported by an experienced and highly motivated 8-strong drafting team producing high quality drawings, including:

- **Kylie Brown**
- **Chanelle Hobson**
- **Ann Panlilo**
- **Adam Sheather**
- **Jackson Veivers**
- **Daniel Chin**
- **Geoff Morris**
- **Connor Wirth**



## Project Methodology

**On each and every project, Aqualogical assembles a team to meet the specific requirements for that project.**

**This team approach enables a wider experience base to be utilised in solving the challenges presented. The end result is better ideas and options for the project.**

### Concept Stage

Aqualogical commits to developing the concept design stage with considerable detail in an effort to minimise potential issues at an early stage.

At the concept design stage, the design team puts together the basic concept design for the project. Ideas are presented and challenged by all members of the team. These options are then considered and selections suitable for the project are made based on their merit.

This concept plan is then presented to the client for review and comment. By using this methodology, Aqualogical is able to produce more accurate and refined hydraulic and fire services systems for the project.

### Design Development Stage

During the design development stage of each project, extensive co-ordination is undertaken with the Architect.

This co-ordination is essential as it becomes the backbone for the design. Once completed, this coordination is then extended to review the structural and mechanical requirements for the project. Authority requirements are also reviewed and any potential issues are discussed with the local inspectors to ensure on site compliance.

### Quality Review

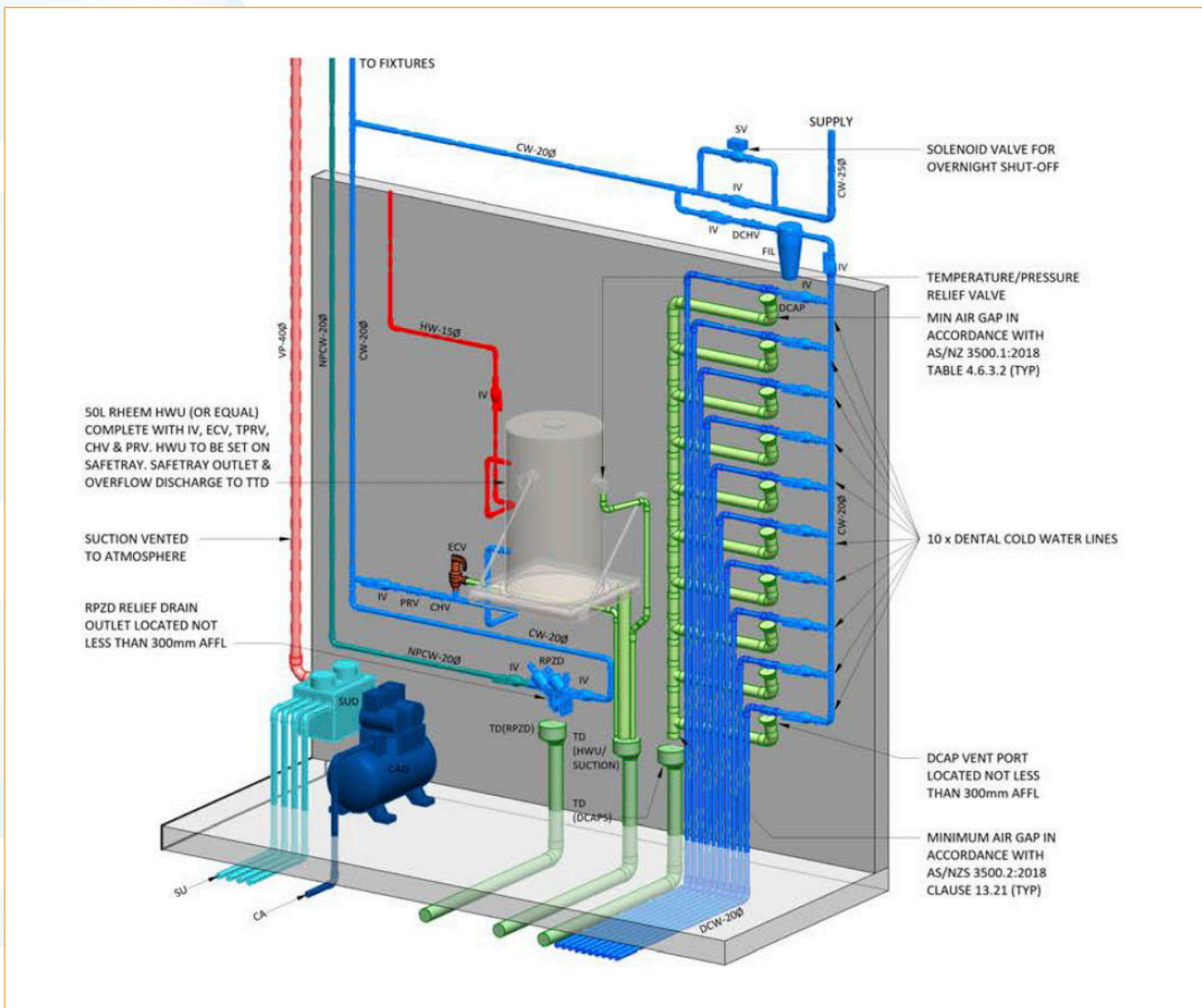
On completion of the design process, and prior to issuing for tender or council approvals, an independent quality review of the design & drafting standards is conducted. The review results are discussed with the designer and any necessary alterations made.

## Contract Documentation Stage

On completion of the quality review, the documentation can be issued for tender. As part of our service, Aqualogical will undertake the preparation of all hydraulic services applications for local authority design approvals and will monitor the approval process through the local authority. This commitment will ensure rapid approval times are achieved.

## Construction Stage

When required, regular quality inspections are undertaken during construction and reports prepared with current on site progress and defects indicated. Material samples are inspected and approved. Attendance at specific tests is also undertaken.



# Experience

Aqualogical have extensive career experience in a wide range of projects. Identified below is a small selection from this experience.

## Supermarkets

- Coles Annandale
- Woolworths Sandgate
- Woolworths Woodford
- IGA Cannon Hill
- IGA Brunswick Street

## Shopping Centres

- Highfields Village Shopping Centre
- Riverlink Shopping Centre
- Regent / Wintergarden Redevelopment
- Sandgate Shopping Centre
- Woodford Shopping Centre
- Marsden Retail Development
- Rosalie Retail Development
- Marina Mirage Shopping Centre
- Wellington Point Shopping Centre

## Tenancies

- Eagle Boys – Australia Wide
- TMH/Sublime Salons - Australia Wide
- Coffee Club – Queensland & WA
- BB's Cafe - Australia Wide
- Pie Face - Australia Wide
- Pizza Capers - Australia Wide
- Donut King - Australia Wide

- Starbucks Coffee - Australia Wide
- Baker's Delight - Australia Wide
- Baker's Delight - Australia Wide
- Nando's – Queensland Wide
- Terry White Chemists- Australia Wide
- Pizza Hut – Australia Wide

## Hairdressers

- Pure Indulgence Orion Springfield
- Mode Hairdressing Centro Gympie
- Toni & Guy Bulimba
- Montpelier Rd Day Spa
- Vibe Nail Studio
- Toni & Guy Academy Sydney

## Industrial

- Swift, Dinmore
- Kilcoy Abattoir
- Fibrecycle
- CSR Bradford
- Swift Beef City Toowoomba
- Mudgee Abattoir
- United Game Processors, Kangaroo & Pig Abattoir, Charleville
- Steel Force Warehouse
- Citiswich Stage 1
- Pacific Foods
- George Weston Foods

## Residential Buildings

- Norris Road Townhouses
- Southbank Student Village
- Ivory on Burleigh
- Ciana Apartments Indooroopilly
- 51 Pitt Road Townhouses
- Taylor Cres Units Cleveland
- Capella Motel
- Nova Apartments
- The Element Burleigh
- Eclipse Apartments Broadbeach
- Pacific Sands
- Quay Apartments

## Office Buildings

- 123 Albert Street Brisbane
- Suncorp Tower (Greenstar Rating)
- 428 Upper Edward Street
- Community Solutions Kawana
- 51 Alfred Street
- 80 Ann Street Brisbane
- Gateway Office Park
- Think Mobile Head Office
- Safelink Offices